

Hva er det som går?

Oppdatert 06.04.2026

Om rapporten

Diagrammene viser forekomst av luftveivirus, atypiske luftveisbakterier, gastroenterittvirus og encefalittvirus i prøver analysert ved mikrobiologisk avdeling, Sykehuset i Vestfold. Avdelingen mottar og analyserer prøver fra pasienter i og utenfor sykehus i Vestfold og Telemark.

Speedometer-diagrammene (side 2) gir et oppdatert øyeblikksbilde av aktivitet for hver enkelt mikrobe (andel positive prøver siste 7 døgn).

De kombinerte søyle- og linjediagrammene viser antall positive (søyler) og andel positive (linjer) prøver per mikrobe per uke siste år. I tillegg vises totalt ukentlig antall analyserte prøver som grå søyler.

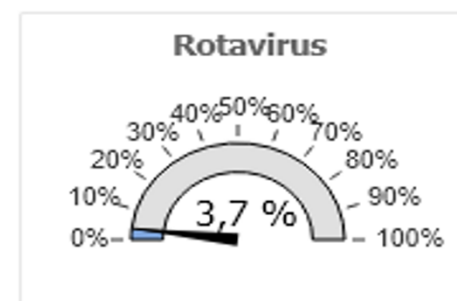
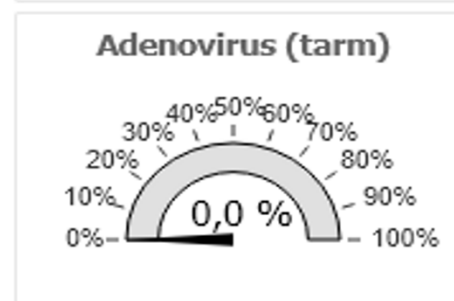
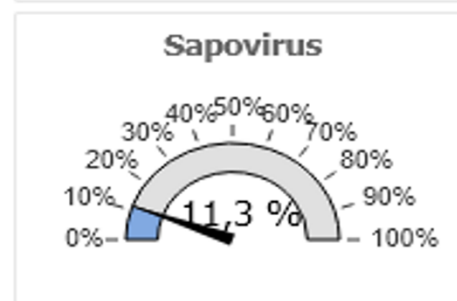
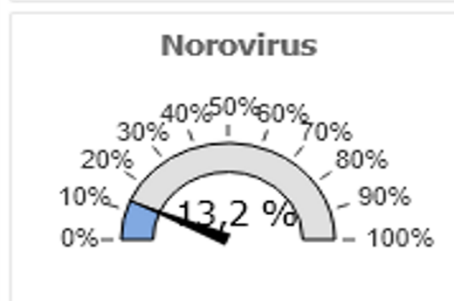
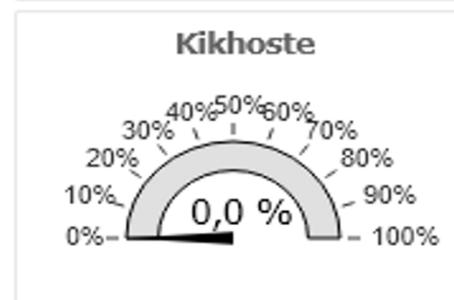
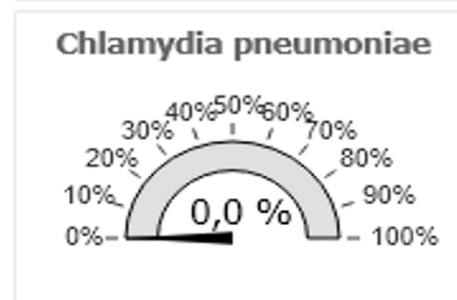
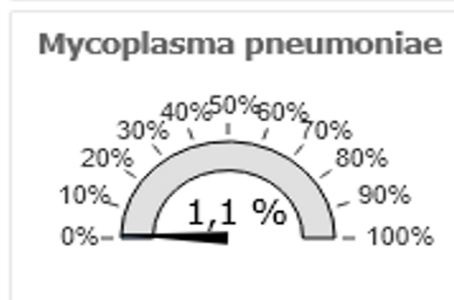
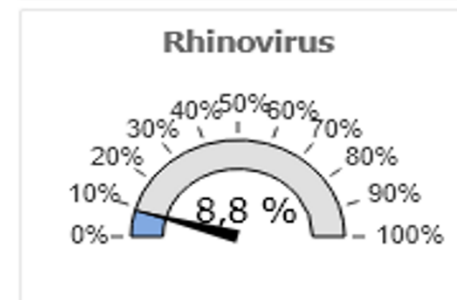
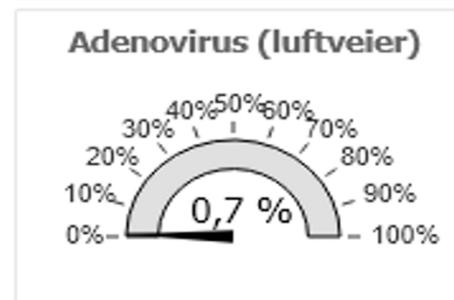
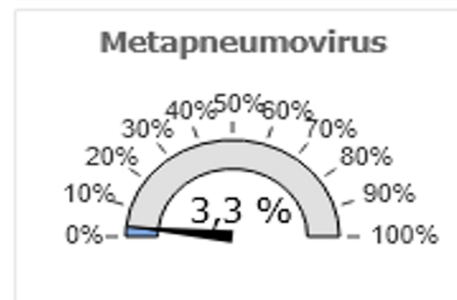
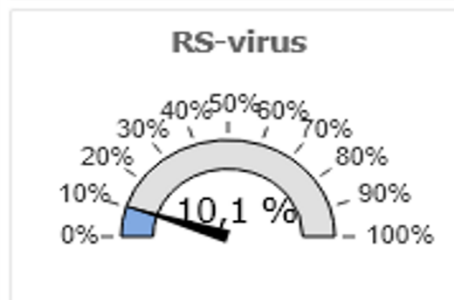
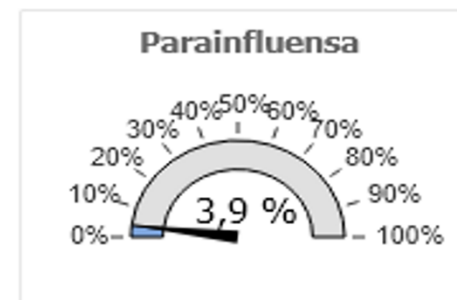
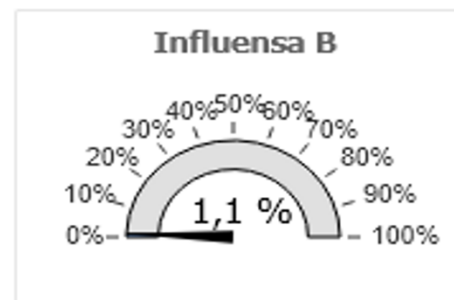
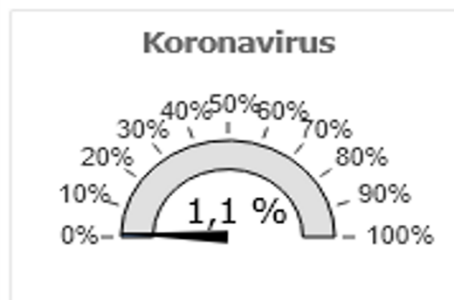
Ukesrapporter publiseres på SiVs internettsider: [[Hva er det som går?](#)]

For nasjonale overvåkingsdata, se FHI: [[Statusrapporter luftveisinfectionsjoner](#)]

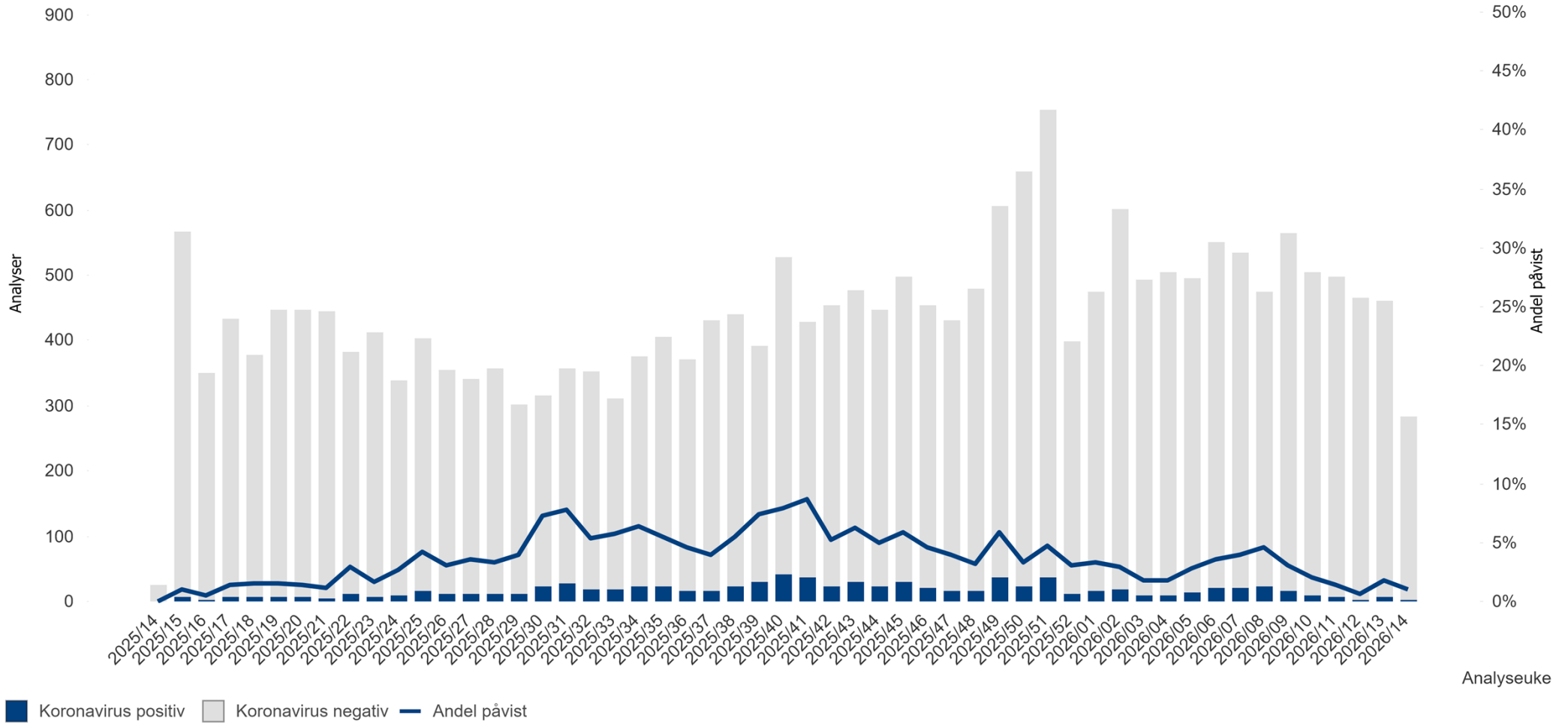
For mer informasjon eller abonnement på ukesrapporter: Send epost til dagfinn.skaare@siv.no

Andel positive prøver siste 7 døgn

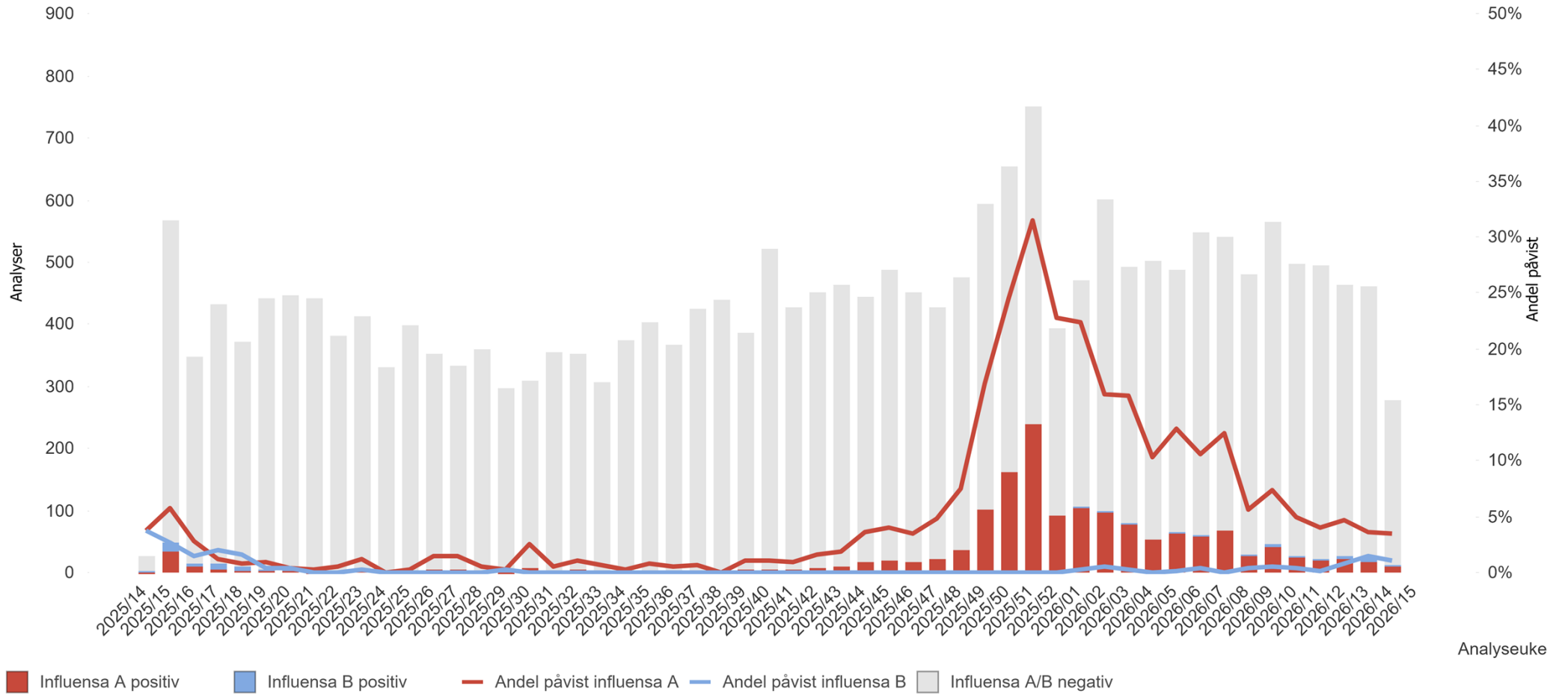
Oppd. 06.04.2026 08:03:14



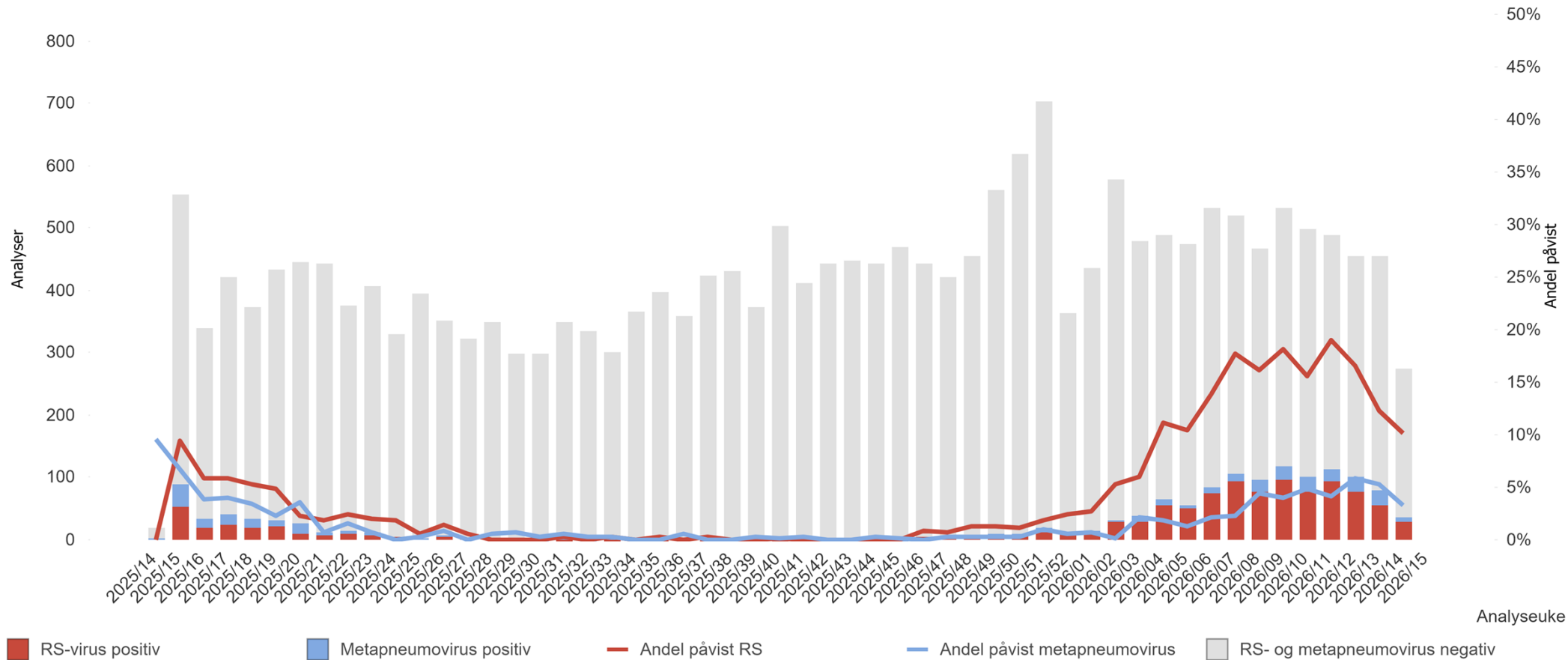
Koronavirus



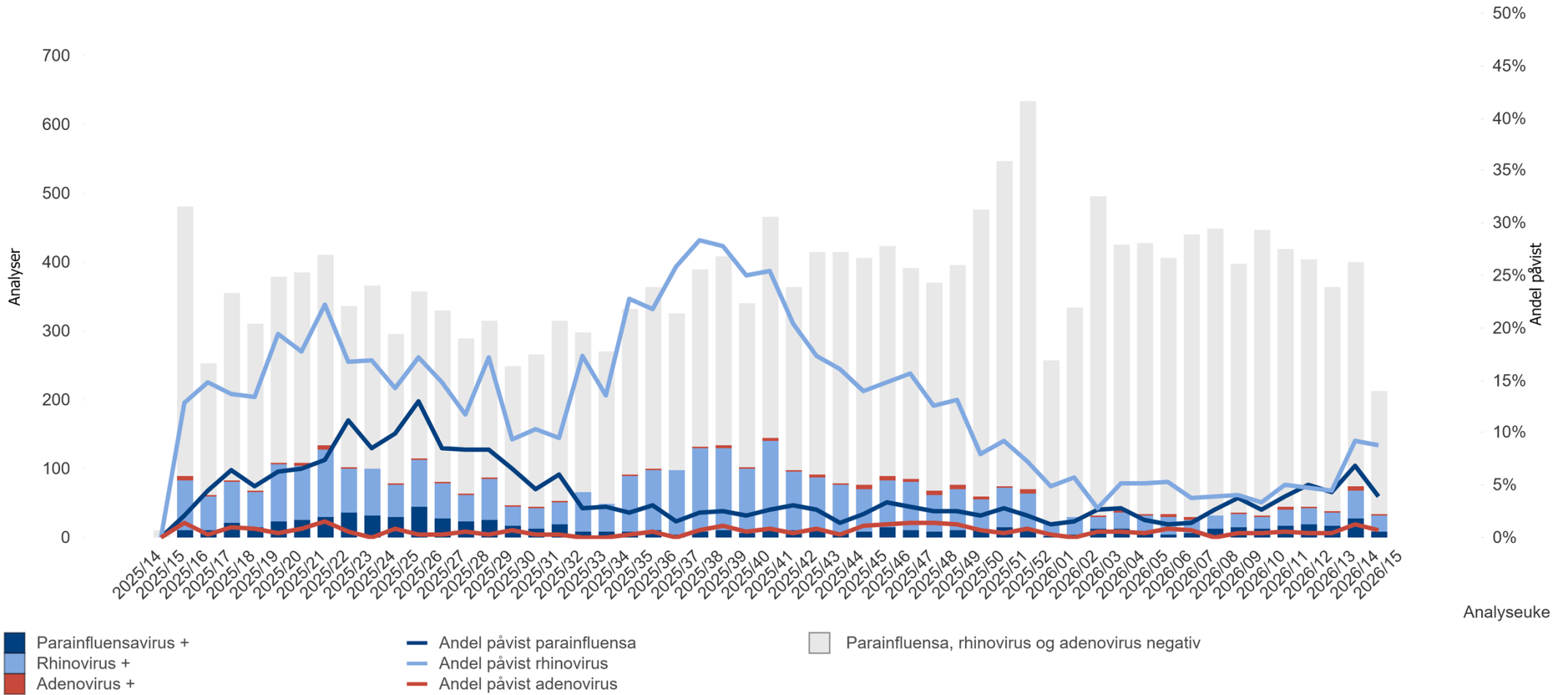
Influensa A/B



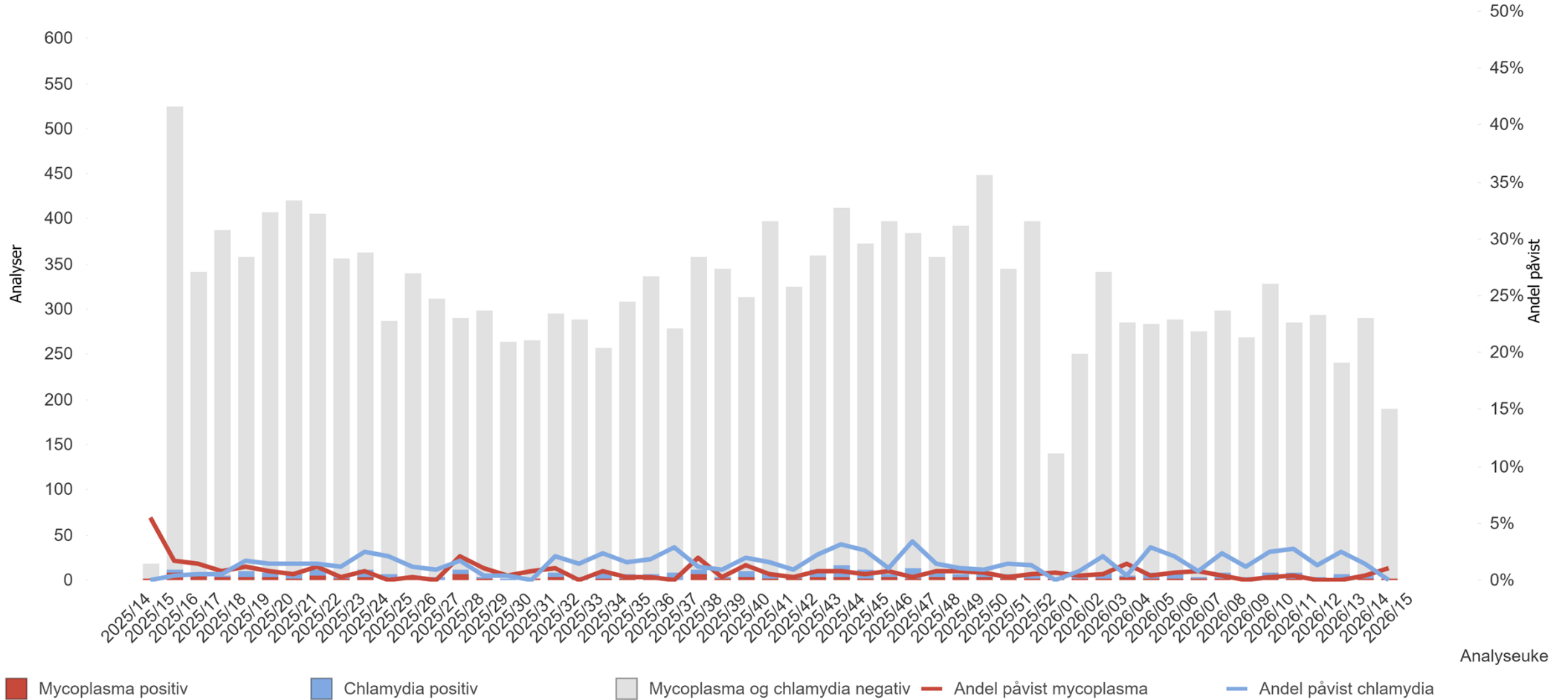
RS- og metapneumovirus



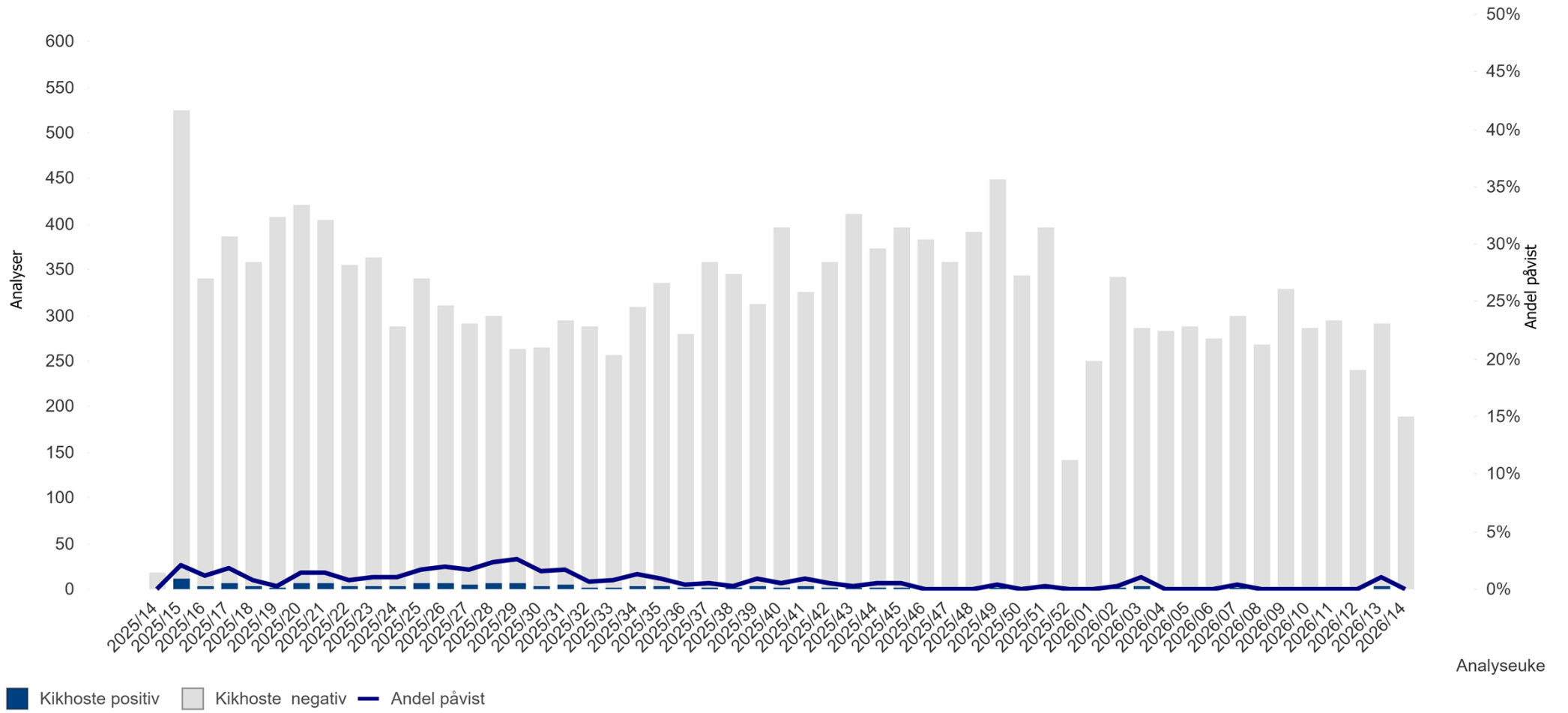
Parainfluensa, rhinovirus og adenovirus



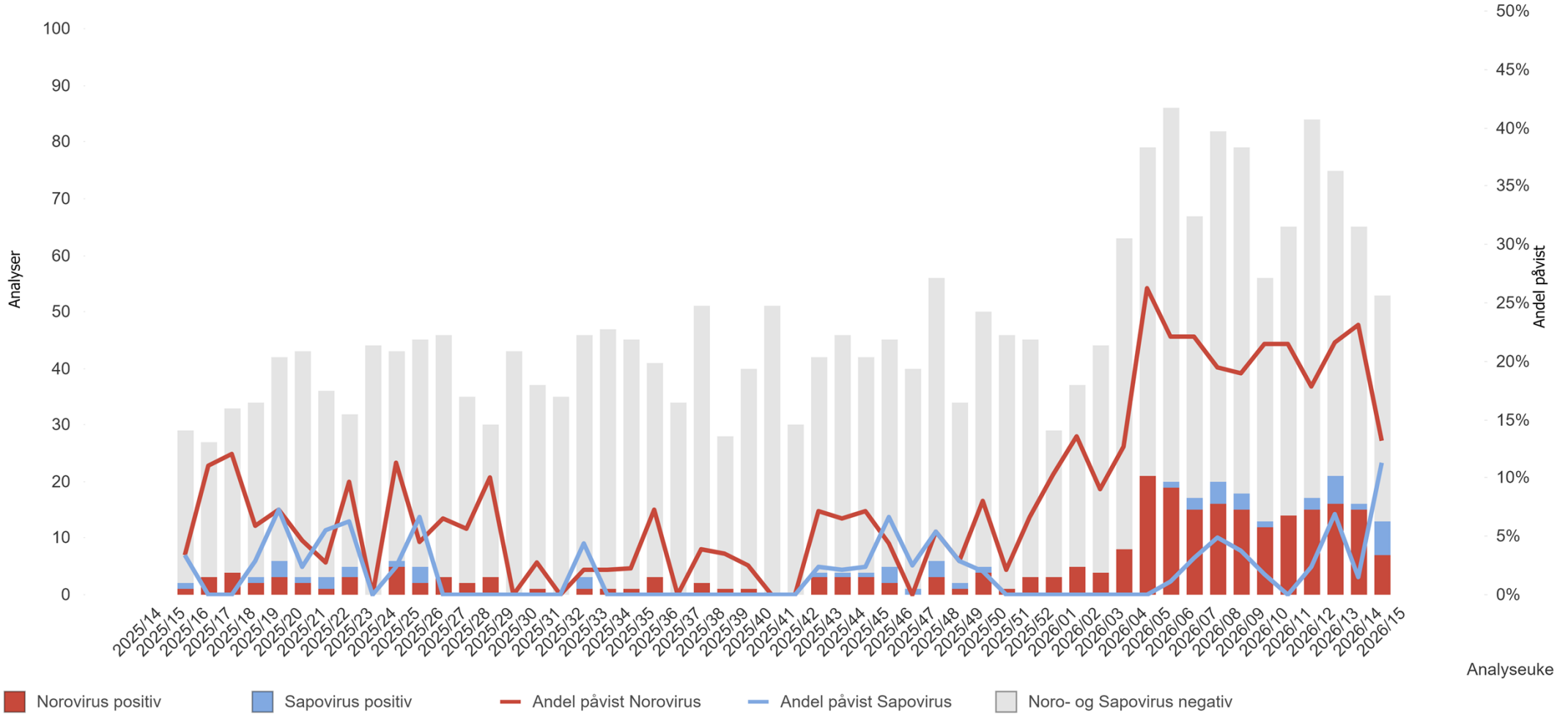
Mycoplasma og Chlamydia pneumoniae



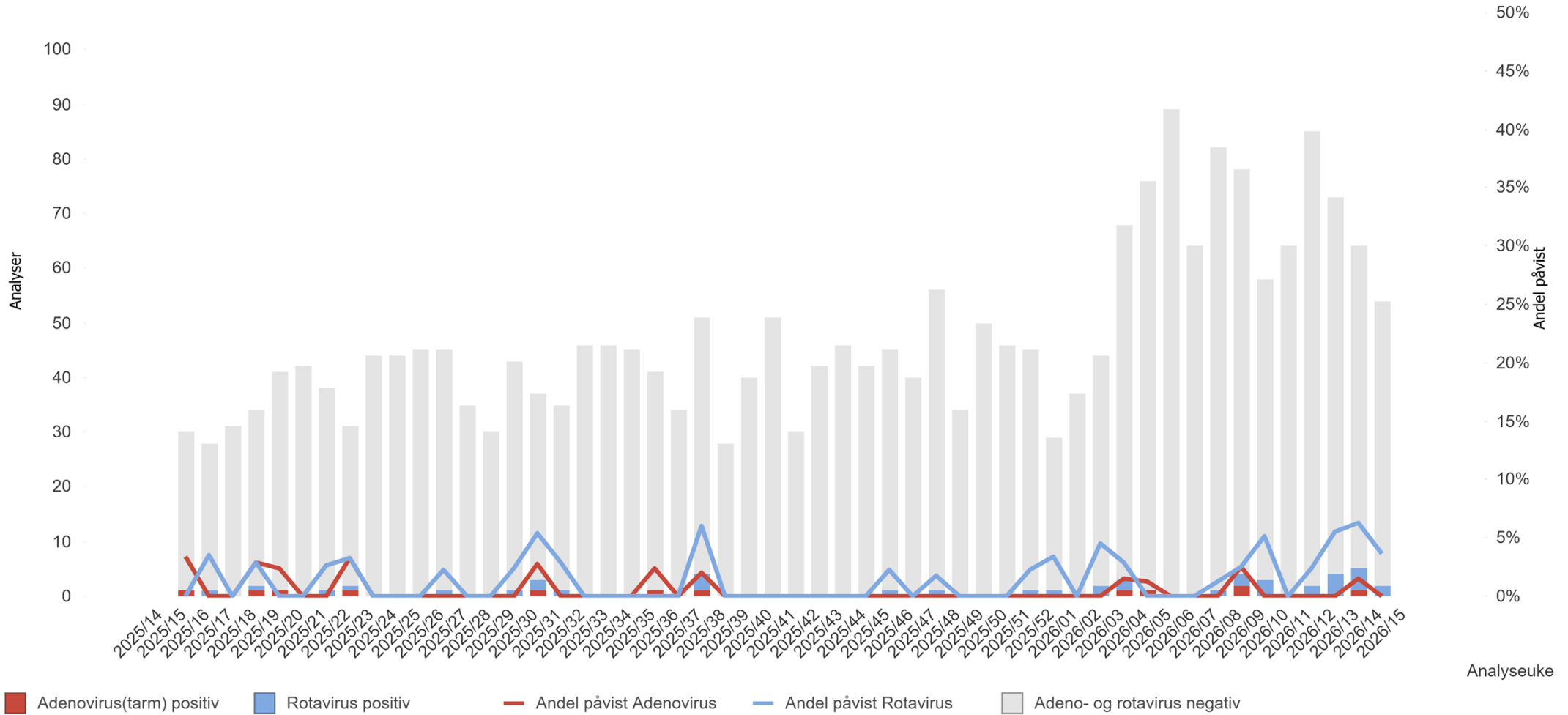
Kikhoste



Noro- og sapovirus



Adeno- og rotavirus



Encefalitt: Entero- og parechovirus (spinalvæske)

